

Taking Action on Social Determinants of Health: A Framework and Workshop

Kylee Funk, PharmD, BCPS
Associate Professor

University of Minnesota College of Pharmacy

Disclosures

- Dr. Funk has no relevant financial relationships with any ineligible companies to disclose.
- The off-label use of medications will not be discussed during this presentation.

Learning Objectives

After completing this activity, learners will be able to:

1. Summarize the impact of social determinants of health on patients.
2. Demonstrate a comprehensive understanding of incorporating social determinants of health into pharmacy practice
3. Recommend strategies for optimizing the integration of social determinants of health services into patient care.
4. Devise a comprehensive plan for integrating social determinants of health into your own practice.

Terminology

- Social determinants of health
- Health disparities
- Health inequities

Social Determinants of Health



Social Determinants Greatly Impact Health

SDOH may account for up to:

- 75% of population health
- 50% of patient outcomes



Screening for SDOH

- Standardized screening tools exist for SDOH
- Pharmacy does not have a consistent method to incorporate SDOH into patient care



Example of Pharmacist Addressing SDOH

- Providing Culturally and linguistically tailored health management
 - Provide culturally tailored handouts
- Addressing Health Literacy and Numeracy
 - Toolkits available.
- Improving food security
 - Screening tools and food pantry locators (example: foodpantries.org)
- APhA resource listing: www.pharmacist.com/SDOH


Research Question: What is the pharmacist's experience incorporating SDOH into CMM?

Received: 9 February 2020 | Revised: 10 April 2020 | Accepted: 12 April 2020

DOI: 10.1002/jac5.1254

CLINICAL PHARMACY RESEARCH REPORT

Incorporating social determinants of health into comprehensive medication management: Insights from the field

Deborah L. Pestka Pharm.D., Ph.D.¹  | Chris Espersen MSPH² |
Lindsay A. Sorge Pharm.D., MPH¹ | Kylee A. Funk Pharm.D.¹

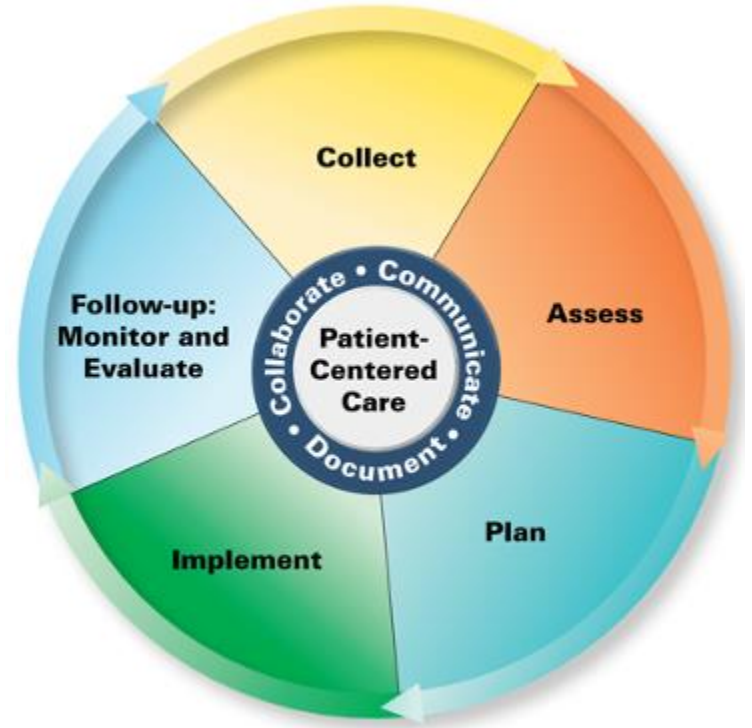
Project Outline

- Outpatient behavioral health clinic
- Established CMM services
- Pharmacists received regular coaching calls to implement SDOH into CMM



Pharmacist's Patient Care Process (PPCP)

- Developed by the Joint Commission of Pharmacy Practitioners
- Endorsed by 13 major national pharmacy organizations



Linking SDOH to the PPCP

System issues/areas for improvement

- Benefit of resources to address SDOH
- Benefit of knowing SDOH before a patient visit
- Documentation of SDOH in the EHR
- Limited time to discuss SDOH during a CMM visit
- Working with patients who are not established in the clinic

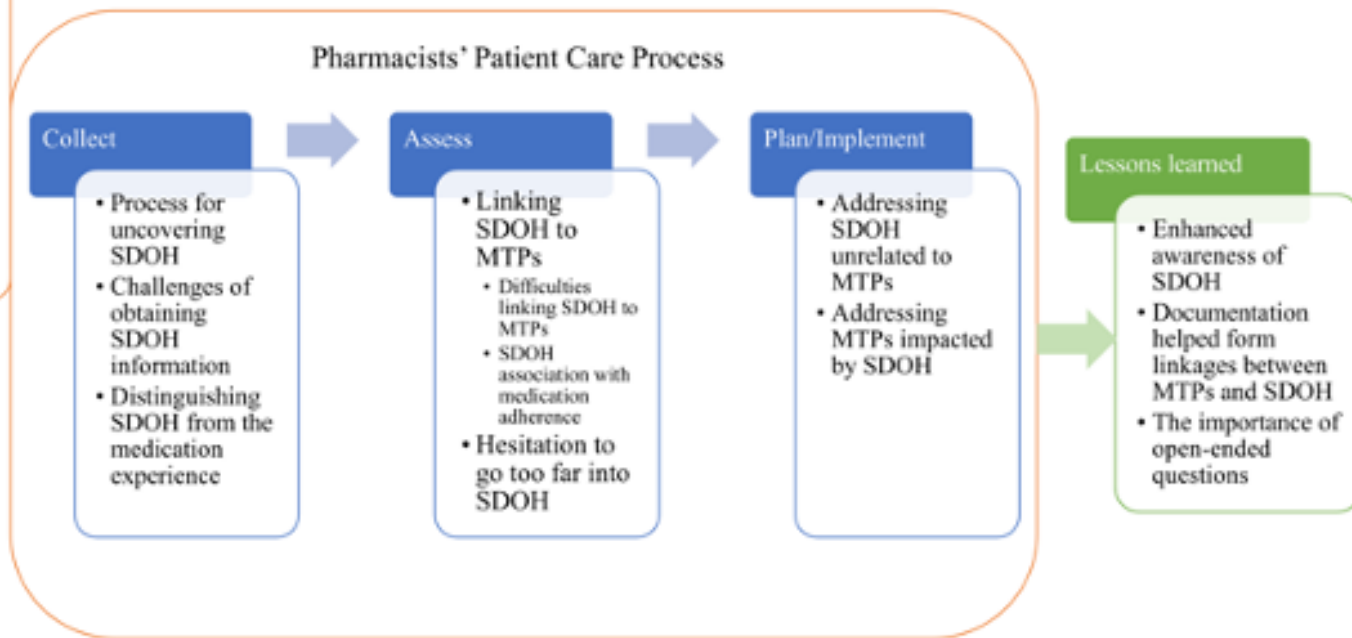


FIGURE 1 Conceptual model of the experience of pharmacists incorporating social determinants of health into comprehensive medication management visits. CMM, comprehensive medication management; EHR, electronic health record; MTP, medication therapy management; SDOH, social determinants of health

Collect

"We have to go through their medications and discuss how those are working as part of our visit. So being able to do all of that, plus something that's not related to meds could be challenging to do in a visit."

Collect

- Process for uncovering SDOH
- Challenges of obtaining SDOH info
- Distinguishing SDOH from the medication experience

Assess

“I still feel like most of our [M]TPs that we identified were in the adherence realm. So even though some of the social determinants could have affected other [M]TPs, I feel like it was more...adherence and what social determinant impacted that or caused that.”

Assess

- Linking SDOH to MTPs
 - Difficulties linking SDOH to MTPs
 - SDOH association with medication adherence
- Hesitation to go too far into SDOH

Plan / Implement

“If [adherence issues] came up, that would be something that I would feel comfortable knowing how to do and could get resources for that”

Plan/Implement

- Addressing SDOH unrelated to MTPs
- Addressing MTPs impacted by SDOH

Systems Issues and Areas for Improvement

“I do think that system level, thinking about a place in our electronic medical record, like a consistent place where [SDOH] could be either assessed or documented that would be available to the whole care team...because I do think the more people who are a part of the patient’s care team that are aware of these things, the more successful we would be at helping overcome some of them.”

System issues/areas for improvement

- Benefit of resources to address SDOH
- Benefit of knowing SDOH before a patient visit
- Documentation of SDOH in the EHR
- Limited time to discuss SDOH during a CMM visit
- Working with patients who are not established in the clinic

Lessons Learned

“It’s the open-ended questions that always seem to be the most effective.”

Lessons learned

- Enhanced awareness of SDOH
- Documentation helped form linkages between MTPs and SDOH
- The importance of open-ended questions

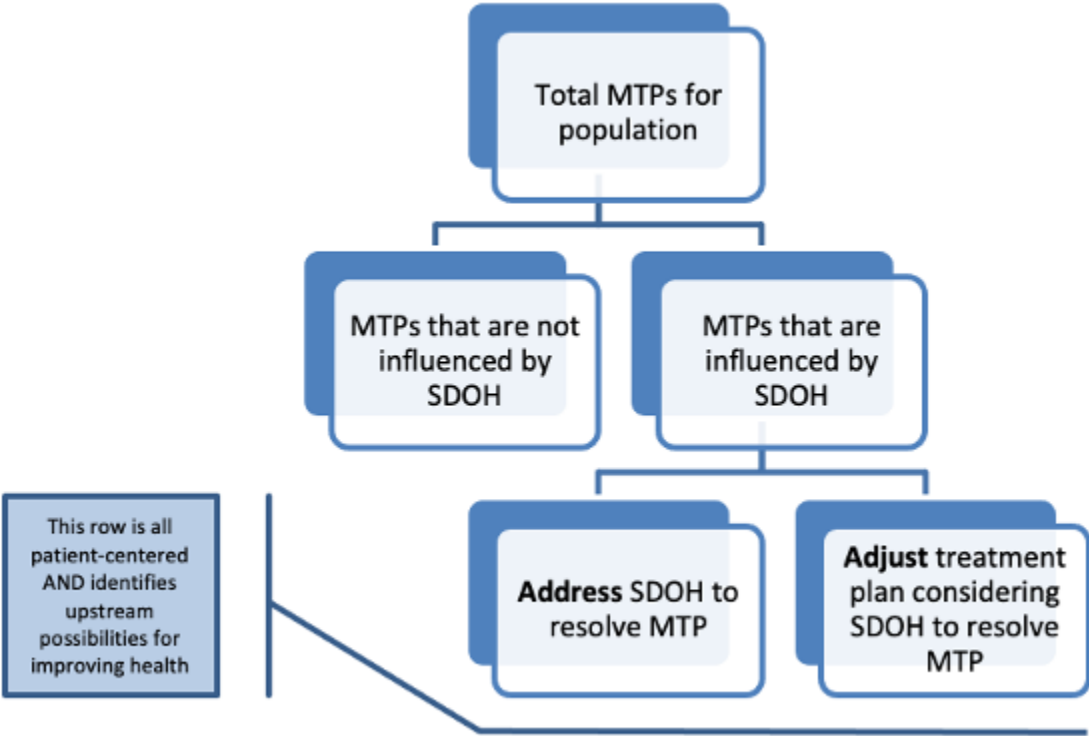
Integrating SDOH into CMM

- Help pharmacists understand connections between MTPs and SDOH
- Documentation of SDOH in the medical record
- Trust is needed to delve into SDOH
- Recognition of the presence and impact of SDOH

Next steps

- First, are pharmacists reaching patients with SDOH?
- More formally document connection between SDOH and MTPs

Framework connecting SDOH to MTPs



Applying the MTP /SDOH Framework

Medication Related Needs	Medication Therapy Problem Category	Medication Therapy Problem Rationale
Indication	Unnecessary medication therapy	Duplicate Therapy
		No medical indication at this time
		Nonmedication therapy more appropriate
		Addiction/recreational medication use
		Treating avoidable adverse medication reaction
	Needs additional medication therapy	Preventive therapy
		Untreated condition
		Synergistic therapy
Effectiveness	Ineffective medication	More effective medication available
		Condition refractory to medication
		Dosage form inappropriate
	Dosage too low	Dose too low
		Frequency inappropriate
		Incorrect administration
		Medication interaction
		Incorrect storage
		Duration inappropriate
	Needs additional monitoring	Medication requires monitoring
Safety	Adverse medication event	Undesirable effect
		Unsafe medication for the patient
		Medication interaction
		Incorrect administration
		Allergic reaction
		Dosage increase/decrease too fast
	Dosage too high	Dose too high
		Frequency inappropriate
		Duration inappropriate
		Medication interaction
	Needs additional monitoring	Medication requires monitoring
Adherence	Adherence	Does not understand instructions
		Patient prefers not to take
		Patient forgets to take
		Medication product not available
		Cannot swallow/administer medication
	Cost	More cost-effective medication available*
		Cannot afford medication product

Framework of connecting SDOH to MTPs

Patient scenario	MTP/SDOH connection	Pharmacist intervention
A patient rations their prescribed asthma inhaler due to a high deductible which makes the full dose difficult to afford.		

Framework of connecting SDOH to MTPs

Patient scenario	MTP/SDOH connection	Pharmacist intervention
<p>A patient is having difficulty accurately dosing insulin based on a sliding scale that was prescribed. This has led the patient to take too little insulin and experience high blood sugars.</p>		

Framework of connecting SDOH to MTPs

Patient scenario	MTP/SDOH connection	Pharmacist intervention
<p>A patient is taking the starting dose of lisinopril when his dose should have been increased 2 weeks ago since his blood pressure remains high, However, his blood pressure is unknown since he was unable to attend a follow up appointment due to transportation barriers</p>		

Framework of connecting SDOH to MTPs

Patient scenario	MTP/SDOH connection	Pharmacist intervention
<p>A patient's testing supplies for diabetes have been lost or stolen multiple times while they have been experiencing recent houselessness. As a result, the patient is unable to monitor their blood glucose.</p>		

How are SDOH connected to MTPs in your Practice?



Talk with your neighbor:

Introduction: Name,
Role, and Work
Setting



What are common
medication therapy
problems you see in
your setting?



Are these common medication
therapy problems connected to
social determinants of health?
Could they be?

How are SDOH connected to MTPs in your Practice?

Large Group Share



Incorporating SDOH into Your Practice

Review of different strategies to incorporate SDOH

- Community Pharmacy
 - Pharmacy Staff Model
 - Community Health Worker Model

Incorporating SDOH into Your Practice

Review of different strategies to incorporate SDOH

- Pharmacist Roles at Different Levels
 - Community
 - Practice
 - Patient

Linking SDOH to the PPCP in ambulatory care

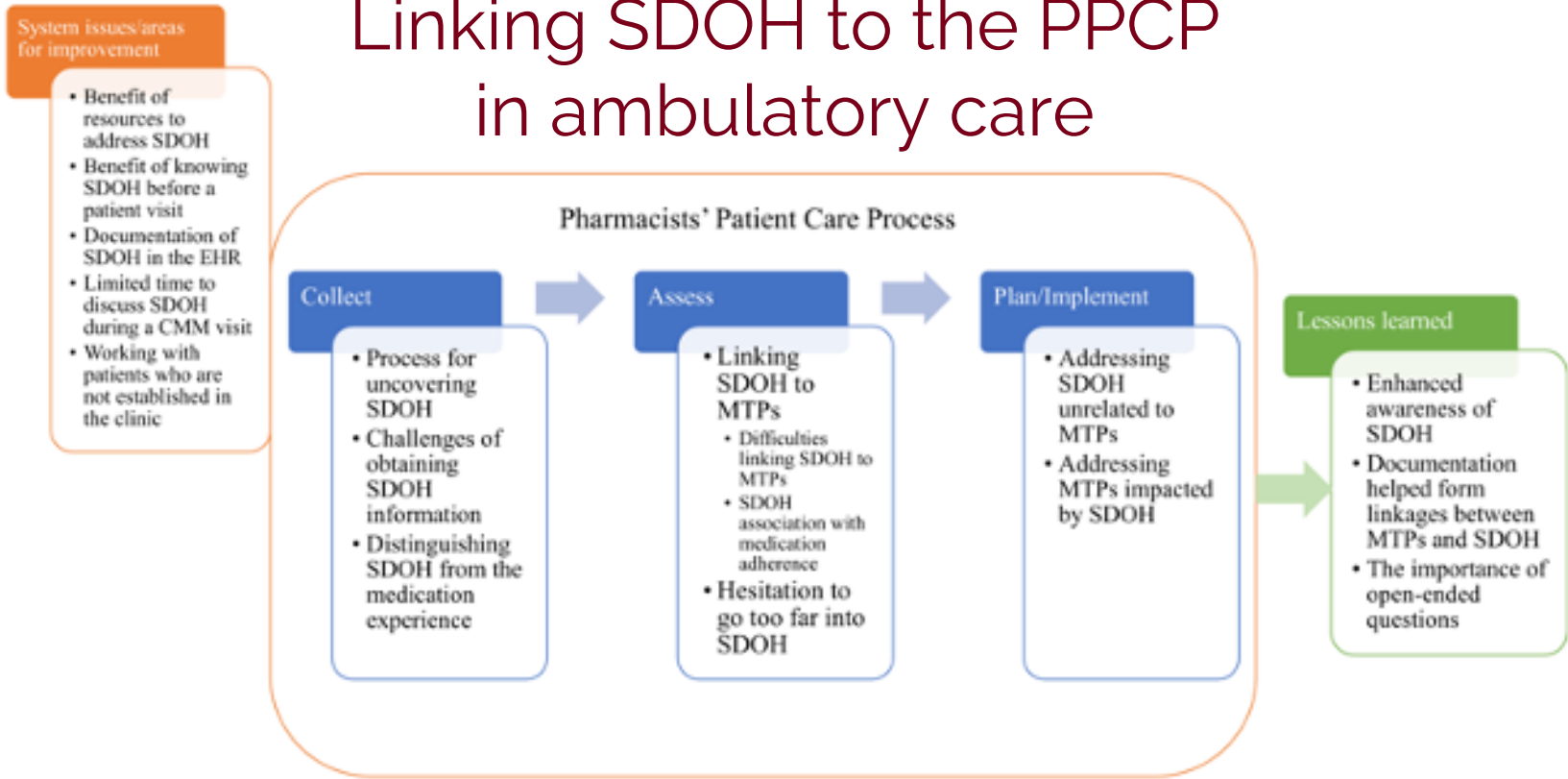


FIGURE 1 Conceptual model of the experience of pharmacists incorporating social determinants of health into comprehensive medication management visits. CMM, comprehensive medication management; EHR, electronic health record; MTP, medication therapy management; SDOH, social determinants of health

In what ways can you incorporate SDOH into your Practice?



Talk with your neighbor:

Introduction: Name,
Role, and Work
Setting



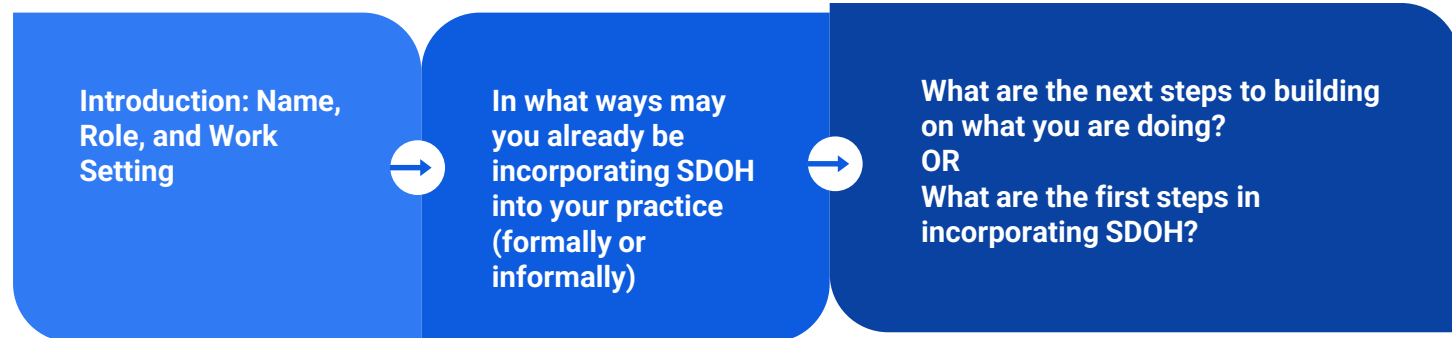
In what ways may
you already be
incorporating SDOH
into your practice
(formally or
informally)



What are the next steps to building
on what you are doing?
OR
What are the first steps in
incorporating SDOH?

In what ways can you incorporate SDOH into your Practice?

Large Group Share



Leaving in Action...

What is one change you will make on Tuesday?

Taking Action on Social Determinants of Health: A Framework and Workshop

Kylee Funk, PharmD, BCPS
kafunk@umn.edu